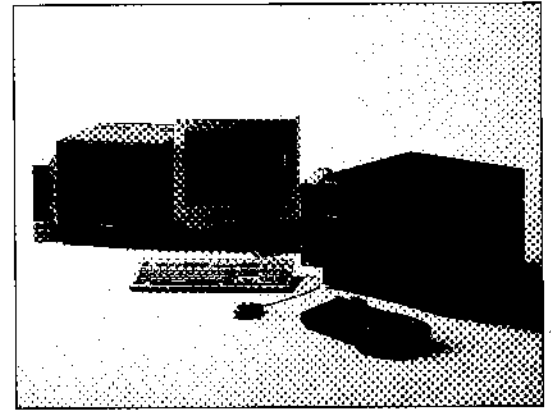
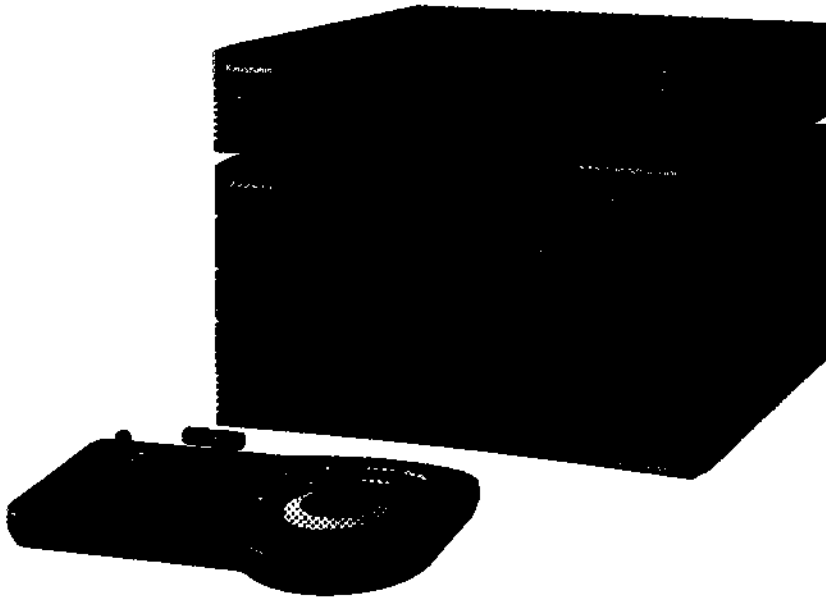


WJ-MX1200 Non-Linear AV Workstation



The Panasonic Nonlinear AV Workstation Main Kit WJ-MX1200K is a combination of powerful hardware, flexible software and a custom human interface; developed for professional post-production. With AV Workstation WJ-MX1200, non linear editing is a creative process that finishes your videos to high standards while maintaining production budgets.

Batch Digitizer

- VTR control for batch digitizing source bins for scene sorting
- Clip database includes in, out, reel, scene number, take number, comment, name
- Clip searching and sorting by keyword/Read reel number from user bits option

Sequence Editor

- "Drag & Drop" Scene placement - Insert, Replace, Cover modes
- Audio follow video on/off edit mode — 3 Layers of video tracks — Video, Key and Title
- Separate "effects" track for dissolves, wipes, compression, etc.
- Over 250 different effects (Inc. 3D DVE)
- Output of CMX compatible EDI.

Audio Processing

- 4 layers of stereo audio tracks
- Equalizer and Reverb Effect

Character Generator

- Including 41 true type fonts
- Automatic crawl or roll
- Automatic Timing of title transitions

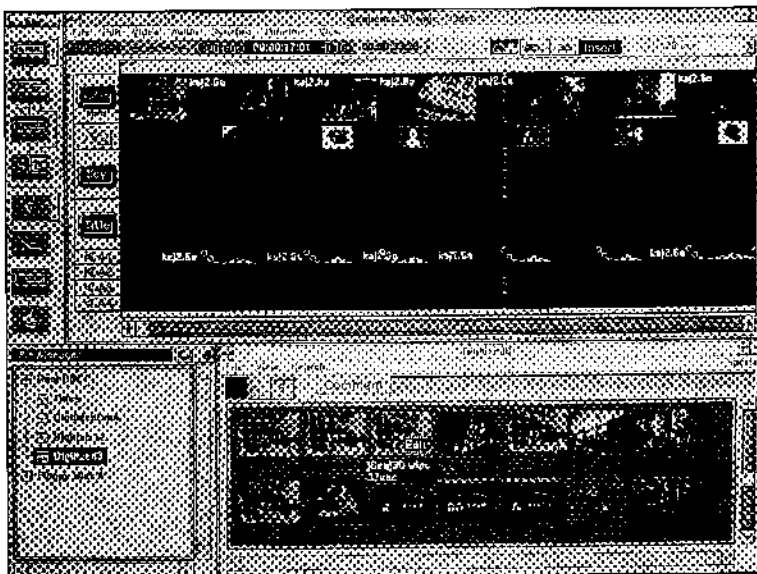
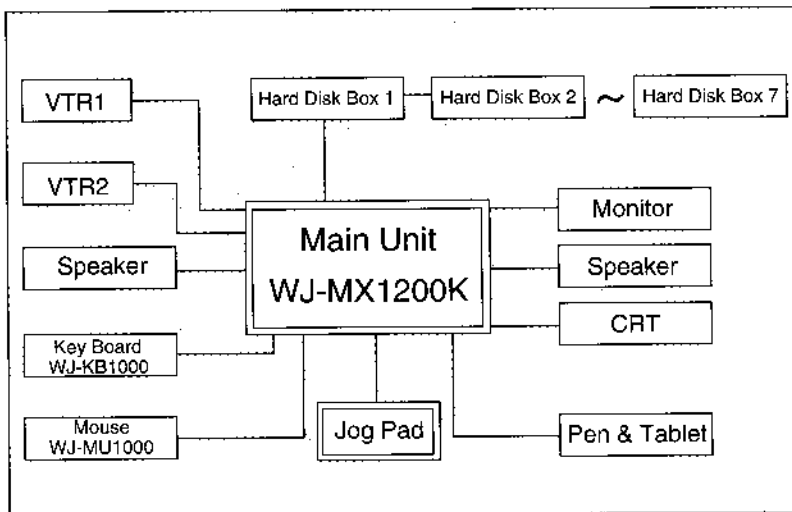
Paint Editor

- Retouch software Cut and Paste, Brush, Stencil, Airbrush, Draw
- TIFF format support

System Configuration

Nonlinear AV Workstation (Main Unit, Jog Pad)	WJ-MX1200K
Software Package	WJ-AS1200
Software Upgrade Kit (V3.5)	WJ-SU1000C (for WJ-MX1000)
Pentium Upgrade Kit	WJ-PB1002 (for WJ-MX1000)
Hardware Upgrade Kit	WJ-PB1003 (for WJ-MX1000)
Hard Disk Box	WJ-EB1000
SCSI Cable	WJ-CA10SR3
Video Board (for 3-D effects)	WJ-PB1001
Keyboard	WJ-KB1000*
Mouse	WJ-MU1000*

* These models are not available everywhere in the world. Please confirm with your Panasonic dealer.



WJ-MX1200

Video

Video Input:	2-source (selectable from Composite, Y/C, Y/P _u /P _v) Composite: 1.0Vp-p/75Ω (BNC) Y/C: Y: 1.0Vp-p/75Ω, C: 0.3Vp-p/75Ω, S-video terminal Y/P _u /P _v : Y: 1.0Vp-p/75Ω (BNC), P _u /P _v : 0.525Vp-p or 0.7Vp-p, 75Ω (BNC)
Video Output:	2-output (simultaneously from Composite, Y/C, Y/P _u /P _v) Composite: 1.0Vp-p/75Ω (BNC) Y/C: Y: 1.0Vp-p/75Ω, C: 0.3Vp-p/75Ω, S-video terminal Y/P _u /P _v : Y: 1.0Vp-p/75Ω (BNC), P _u /P _v : 0.525Vp-p or 0.7Vp-p, 75Ω (BNC)
Synchronization	
Gen-Lock Input:	1.0Vp-p/75Ω (BNC), with loop-through output (x1)
ADV.REF Output:	Sync: 0.3Vp-p/75Ω, Burst: 0.3Vp-p/75Ω
Audio Input	Selectable from 4-source
Source 1/2:	+4dBu, Hi-Z balanced (3-pin XLR connector)
Source 3/4:	-6dBs, 20kΩ unbalanced (RCA pin jack)
Audio Output	4-output (simultaneous)
Ch. 1/2:	+4dBu, 47Ω balanced (3-pin XLR connector)
Ch. 3/4:	-6dBs, 75Ω unbalanced (RCA pin jack)
Other Inputs/Outputs:	LTC time code input x1 (BNC), LTC time code output x1 (BNC) SCSI connector x4 (Audio, Video 1, Video 2, Video 3, SCSI-2 standard, 50-pin half pitch connector, bellows type) VTR control connector: RS-422, 9-pin/2 (D-sub), Jog Pad connector: 9-pin x1 (D-sub)
PC:	CPU: Pentium 166MHz OS: Windows 95, Main Memory: 32MB Built-in Hard Disk Drive: 1.2GB (IDE) x1, Floppy Disk Drive: 1.44MB x1 Card Slot: ISA x1 (supplied by Panasonic only) SVGA connector: 15-pin x1 (D-sub, female), 1024 x 768-dot, 256-colour Scanning: 35kHz (horizontal), 86Hz (vertical), Parallel Connector: 25-pin x1 (D-sub, female) Serial Connector: 9-pin x2 (D-sub, male). Mouse: 6-pin x1 (Mini-Din), Keyboard: 6-pin x1 (Mini-Din)

Video Performance

Signal-to-Noise Ratio:	55dB (Y/P _u /P _v), 53dB (Y/C), 50dB (Composite)
Crosstalk:	50dB = 4.43MHz
DG, DP:	5%, 3°
Frequency Response:	4.5MHz, +0dB, -3dB (Y/C, Y/P _u /P _v)
Sampling Frequency:	13.5MHz, 4:1:1, 8 bit component
Y/C Separation:	3-line, digital logical comb filter
SC-H:	±30°
Compression:	MOTION JPEG
Video Quality:	Level Q3, Q6, Q8, Q11, Q19
Recording Time:	Approx. 3 min./GB (Q3), Approx. 6 min./GB (Q6), Approx. 7 min./GB (Q8), Approx. 10 min./GB (Q11), Approx. 14 min./GB (Q19)
Title Graphics:	Resolution: 640 x 480-dot Y, U, V, a, 8-bit component each, Font: 41 True type

Audio Performance

Signal-to-Noise Ratio:	More than 70dB (1kHz, XLR OUT)
Dynamic Range:	More than 88dB
Total Harmonic Distortion:	0.05% (1kHz)
Frequency Response:	20kHz, +0, -3dB, 20Hz, +0, -3dB
Sampling Frequency:	48kHz, 16-bit
Mixing:	Stereo 4-channel
Effector:	EQ, Reverberation
Recording Time:	Approx. 86 min./GB

Others

EDL Output:	CMX 3600, CMX340, GVG, BVE9000, AU-A950
Graphic Conversion:	TIFF, JPEG, Zsoft, TARGA, BMP, Meta, Tiff with JPEG, MacPICT

General

Power Supply:	220 ~ 240V AC, 50Hz
Power Consumption:	110W (with optional Video Board)
Ambient Operating Temperature:	0°C ~ 35°C
Ambient Operating Humidity:	10% to 90%
Dimensions (W x H x D):	420 x 229 x 450 mm
Weight:	Main Unit: 20 kg, Jog pad: 1.15 kg