

AU-45H MII Dockable Recorder

MI



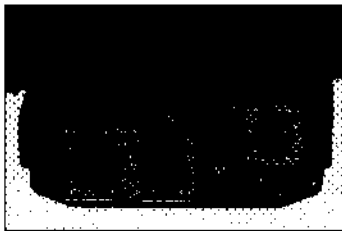
- Light-weight 2.7 kg, low-profile design
- Low power consumption (maximum 12W)
- 68-pin camera connector allows direct docking with the WV-F700A, WV-F565, WV-F350A and WV-F250A cameras

- One-touch rec. review function
- Reliable CTCM/INITIAL check function
- Four audio channels: FM audio (CH3/CH4) and linear audio (CH1/CH2) with Dolby-C* noise reduction circuitry
- Built-in EBU time code generator (VITC/LTC)
- 24-minute recording with AU-M20S on a small cassette
- Automatic backspace editing for high picture quality in successive recordings
- Phantom power supply to external mic connector
- On-screen set-up menu with digital hour meter
- Search function at 5x normal speed
- Side-mounted speaker allows audio monitoring
- Audio AGC (Auto Gain Control)
- Accepts AU-BP402, NP1 and Anton/Bauer battery packs

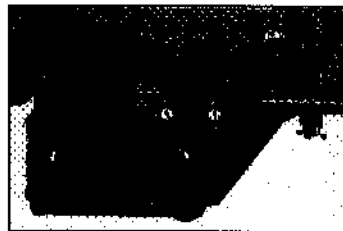
Standard Accessory

Connecting Screws

Optional Accessory



Rear Connector



Side Connector



AU-45H with WV-F565
Digital Processing
Camera

AU-45H

General

Power Supply:	12V DC +5V, -1V
Power Consumption:	Approx. 12W
Playback Time:	24 minutes with AU-M20S
Search Speed:	±5x
FF/REW Time:	Approx. 2 minutes with AU-M20S
Operating Temperature:	0°C to 40°C
Operating Humidity:	Less than 85%
Dimensions (W x H x D):	122.5 x 218.5 x 204 mm
Weight:	2.7 kg (without handle)

Audio

Linear (CH1/CH2)

Frequency Response:	50Hz to 15kHz, +2.0/-3.0dB
S/N Ratio (at 3% distortion):	Better than 56dB (Dolby NR Off)
Distortion:	Less than 1.0% at 1kHz standard input level
Erase Ratio (at 1kHz):	Less than -65dB
Wow and Flutter:	Less than 0.15%

FM (CH3/CH4)

Frequency Response:	20Hz to 20kHz, +1.0/-2.0dB
Dynamic Range:	More than 80dB (A.WTD)
Distortion:	Less than 0.5% at 1kHz standard input level
Cross Talk:	Less than -65dB (1kHz)

Video Input

Video In:	68-pin Multiconnector Y: 1.0Vp-p, 1kΩ Pa, Pb: 0.7Vp-p, 10kΩ, (100% colour bar, 0% set up)
-----------	---

Video Output

Video Out:	BNC x 1, 1.0Vp-p, 75Ω
------------	-----------------------

Audio Input

Audio In:	XLR 3-pin x 2, (CH1/CH3, CH2/CH4) LINE: +0dBu 3kΩ balanced MIC/CAM: -60dBu 3kΩ balanced CAM/REAR1/REAR2 switchable, MIC/LINE switchable
Time Code In:	BNC x 1, 0.5Vp-p to 8Vp-p, high impedance balanced

Audio Output

Time Code Out:	BNC x 1, 2.2Vp-p high impedance, unbalanced
Audio Monitor Out:	M3 earphone jack → -20dBu (variable) 8Ω