

3 in 1 Hi-Fi VHS Duplicator Downloaded from: www.broadcast-trader.com.au

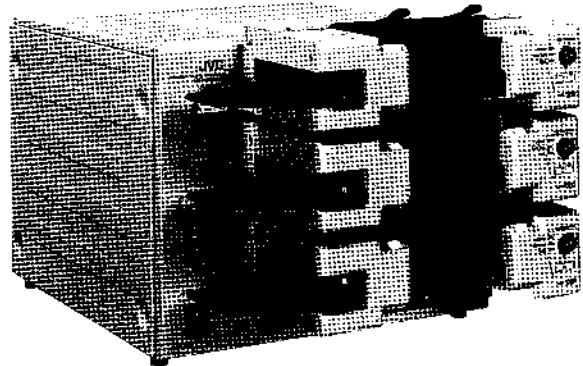
BR-7040EDB (PAL/SECAM) REC ONLY



- VHS PAL/SECAM dual recording capability
- 3 in 1 Hi Fi VHS Duplicator with optional auto cassette loaders
- Four-way cost savings (in space, energy, peripheral equipment costs, and labour)
- Hi-Fi audio with dynamic range of 87 dB
- Dolby* B noise reduction for normal audio
- RCA serial code remote control IN/OUT loop-through connectors
- Audio input level meter
- Built-in self-diagnostic warning system
- Three 5000-hour meters
- Independently replaceable recording units
- Front panel test points with recorder unit selectors
- Automatic head cleaning mechanism
- The optional SA-K14U ID code board

* VIDEO & AUDIO specifications are based on playback by a standard player/recorder.

* Dolby noise reduction system manufactured under license from Dolby Laboratories Licensing Corporation "Dolby" and the Double-D symbol are trademarks of Dolby Laboratories Licensing Corporation 



Picture shows BR-7040EDB with optional SA-L30U auto cassette loaders

Remote Controller Required

GENERAL

Format: VHS PAL/SECAM (SP only)
Tape width: 12.65 mm (1/2 inch)
Tape speed 23.39 mm/s
Recording time: 180 minutes with E-180 cassette
Fast forward/rewind time: 4.5 min. for 180 min. tape
Operating temperature: 5°C to 40°C
Storage temperature: -20°C to 60°C
Ambient humidity: 30% to 80%
Power consumption: 64 watts (with loader)
Power requirement: 220-240 V AC ~ 50/60 Hz
Dimensions: 430 (W) x 395 (H) x 675 (D) mm (with loaders and video cassettes)
430 (W) x 345 (H) x 485 (D) mm (without loaders)

Weight: 36 kg (80 lbs) (with loaders)

VIDEO

Recording system: Totary two-head helical scanning system
Luminance: FM recording
Colour: Down-converted direct recording

Video signal system: PAL/SECAM type Colour Signal

Input: 0.5 to 2.0 Vp-p, 75 ohms, unbalanced, BNC

Signal-to-noise ratio: 43 dB (Colour, PAL)
45 dB (Monochrome, PAL/SECAM)

Horizontal resolution: 240 lines (Colour, PAL)
230 lines (Colour, SECAM)

AUDIO

Input level (line): -6 dBs, 10 k-ohms, unbalanced (Hi-Fi/Normal), RCA

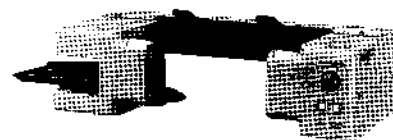
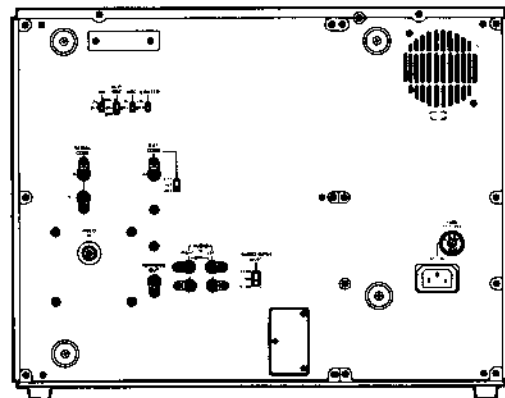
Signal-to noise ratio: 42 dB (NR-off, at 3% distortion)

Frequency response: 20 to 20,000 Hz (Hi-Fi)
40 to 12,000 Hz (Normal)

Wow and flutter: Less than 0.006% wrms (Hi-Fi) Less than 0.2% wrms (Normal/Self-recording & PB)

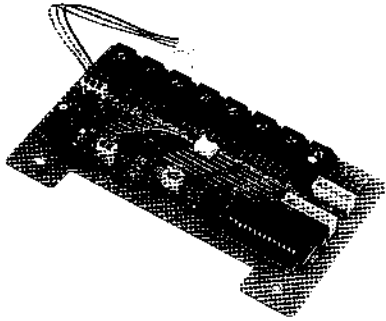
Dynamic range: 87 dB (Hi-Fi)

* VIDEO & AUDIO specifications are based on play back by a standard player/recorder.

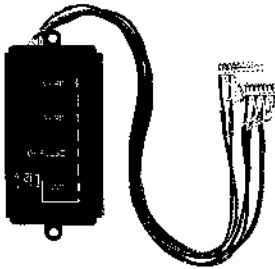


SA-L30U
Auto Cassette Loader
for BR-7040EDB

Duplicator Accessories



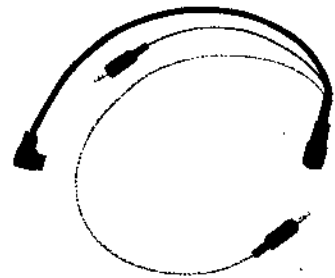
SA-K14U
ID Code Board
for BR-7040EDB



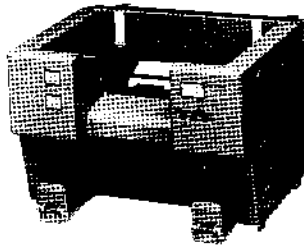
SA-K722U
Test Point Unit
for BR-7020ED



SA-K723U
Multi-Display Unit
for BR-7020ED



VC-G723U
Cable for SA-K723U and
BR-7040EDB
with SA-7040EH unit



SA-L50U
Auto Cassette Loader
for BR-7020ED



RM-G77U
Serial Remote Control Unit
Control up to 200 x
BR-7040EDB
BR-S777E/BR-7020ED



RM-G30U
Serial Remote Control Unit
Control up to 10 x
BR-7040EDB
BR-7020ED/BR-S777E



SA-LH50U
Cassette Holder of



SA-L30U
Auto Cassette Loader